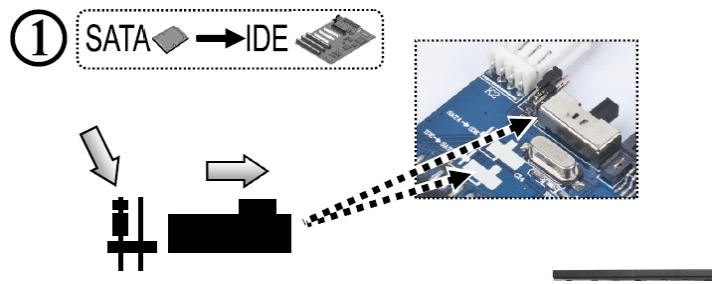
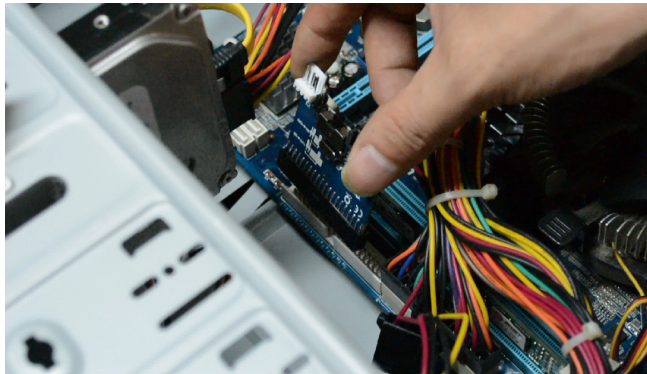


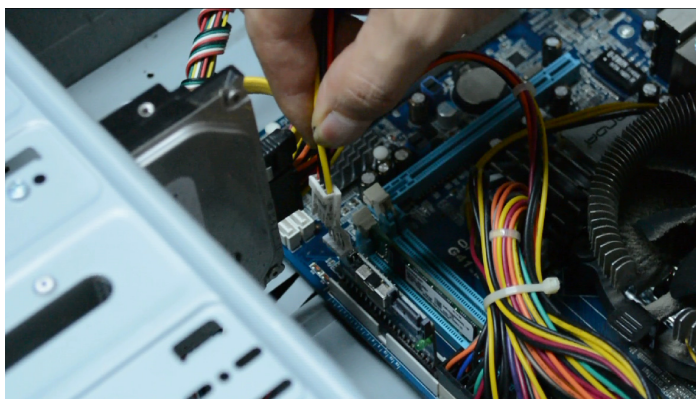
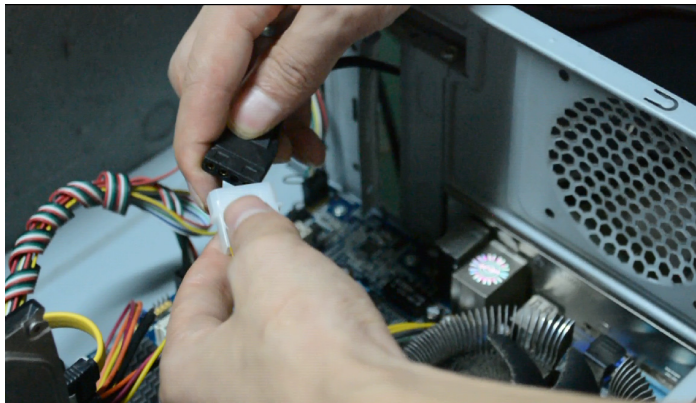
1)first make the swith is on the correct way like below picture.



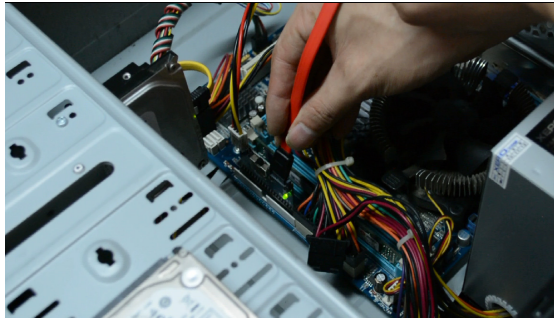
2)install the card on the computer



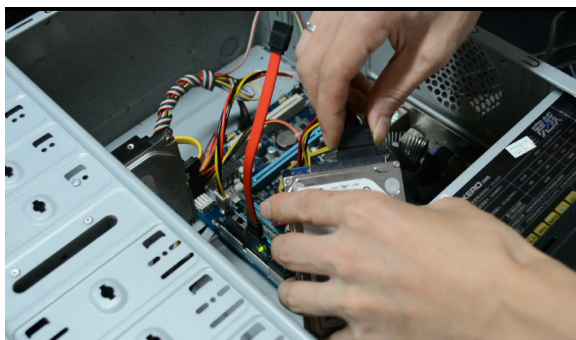
3)4PIN power cable to install:



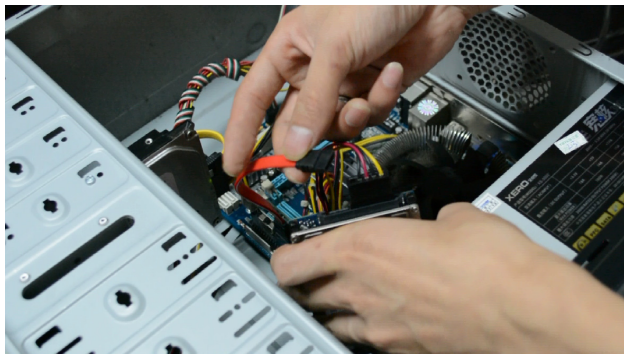
4) One of 7PIN SATA cable install on the card:



5) SATA HDD contact 15pin power cable from PC



6) Other of 7PIN cable install on the SATA HDD



7) Turn on the PC



8) then you will find the new HDD on the PC:

